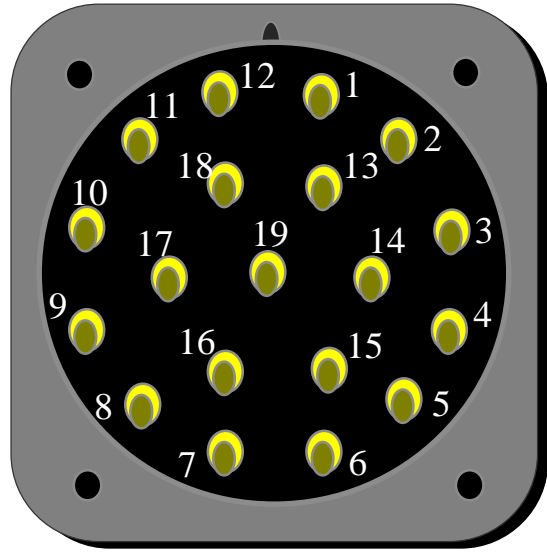


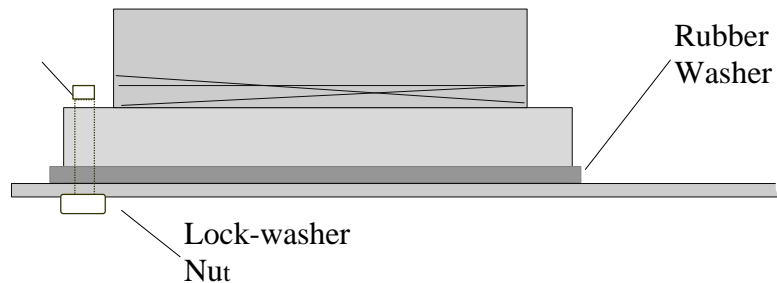
Pin 1	Hot	1
Pin 2	Neutral	1
Pin 3	Hot	2
Pin 4	Neutral	2
Pin 5	Hot	3
Pin 6	Neutral	3
Pin 7	Hot	4
Pin 8	Neutral	4
Pin 9	Hot	5
Pin 10	Neutral	5
Pin 11	Hot	6
Pin 12	Neutral	6



Pins 13, 14, 15, 16, 17, 18 and 19 are connected with a ground disk (07-4086) that presses firmly over these pins. Soldering is not necessary.

Green wire is connected to pin 17.

6-32 X 1/2
Filister head



REV: B	Date: June 4, 1998	UPDATED BY: Connie Blevins	FILE NAME: Z:\docbin\9083021B.doc	Pg 1 of 1
-----------	-----------------------	-------------------------------	--------------------------------------	-----------